

ST ANSELM'S CATHOLIC PRIMARY SCHOOL DRUG EDUCATION AND MANAGING DRUG RELATED INCIDENTS POLICY



Learning and growing together through prayer, belief and love

This policy was approved by the Pupil Committee of the Governing Body on 28th January 2020 and presented to the Governing Body on 12th February 2020

SCHOOL STATEMENT

The implementation of drug education is of importance to St Anselm's and is delivered through the PSHE, Healthy Living and Science curriculum. It is further supported by visits from other organisations that provide relevant workshops such as the Wizard Theatre Company. The PSHE subject lead supports colleagues in the teaching of drug and substance misuse education by giving them information about current developments in the subject and by providing a strategic lead and direction for the subject in the school

PURPOSE OF THE POLICY

- To clarify the school's approach to drugs and managing drug related incidents
- To clarify the legal requirements and responsibilities of the school
- To give guidance to staff on the drug and substance misuse education programme
- To promote and safeguard health and safety of pupils and staff within the school
- To enable staff to manage drug and substance misuse related incidents with confidence and consistency
- To reinforce safeguard the health and safety of pupils and the school community
- To provide a basis for evaluation the effectiveness of the school's approach to drug and substance misuse education and management of incidents
- Reinforce the role of the school in our involvement in the Healthy Schools' programme
- To ensure this policy is fully implemented and disseminated to ensure understanding and adopting for all of those connected with the school; pupils, parents, teachers, governors and all staff.

LINKS WITH OTHER POLICIES

This policy has been developed as part of the whole school approach to drug issues and should be read in conjunction with the DFE and ACPO Drug Advice for Schools and the following school policies:

- Behaviour
- Anti-Bullying
- Safeguarding and Child Protection
- SEND
- Health and Safety
- Medical Needs
- Physical Restraint and Use of Reasonable Force
- Curriculum related policies such as PSHE and Science

INTRODUCTION

The school is committed to the welfare and safety of all its members and will take action to safeguard their well-being. The school does not condone the misuse of drugs and alcohol or the illegal supply or possession of these substances by staff or pupils. The school aims to provide a school ethos, environment and curriculum where pupils are able to develop self-confidence, take responsibility and make informed, healthy and safe choices. The school acknowledges

its pastoral role in the welfare of the children and young people. This policy refers to all children in the school and members of the school community. Any professional misconduct relating to drugs or substance misuse will be dealt with according to the Code of Conduct for Staff and the CES Terms and Conditions of Employment dealt with by the Headteacher and Governing Body.

The term 'drugs' in this policy refers to all legal drugs including alcohol, tobacco, volatile substances and all illegal drugs.

This policy applies to:

- Situations on the school premises, including building and grounds
- Off-site activities, visits and school trips including residential journeys
- Adults involved with the school e.g. visitors, adults supporting on school trips

Members of staff with key responsibilities for this policy are:

- The Headteacher/Deputy Headteacher who will oversee and co-ordinate drug and substance misuse issues
- The PSHE subject leader who will oversee the drug and substance misuse education programme.

PROCEDURE FOR MANAGING DRUG RELATED INCIDENTS

In order to support our aims and objectives, members of the school community may on occasion need to take action with regard to a drug or substance misuse related incident. The Headteacher / Deputy Headteacher in charge of pupil welfare take overall responsibility for co-ordinating the school's approach to drug incidents.

Our definition of drug includes medicines, alcohol and tobacco it is therefore important that all aspects of an incident are considered. The needs and circumstances of the pupils are paramount.

We will consider each situation individually and recognise that a variety of actions in response may be necessary to drug related incidents as recommended by: DfE and ACPO drug advice for schools:

<https://www.gov.uk/government/publications/drugs-advice-for-schools>

If the situation leads to a medical emergency the school emergency aid procedures will be followed immediately.

Responses will be cross-referenced with related school policies such as:

- Behaviour
- Health and Safety
- Safeguarding and Child Protection
- Educational Visits

Drug related incidents might include:

- rumours or hearsay about drug use
- allegation or suspicion of possession on school premises
- pupils under the influence of a drug on the school premises
- pupil disclosure about own use of drugs
- pupil disclosure or school discovers parent/carer is using or selling drugs
- drugs or drug paraphernalia found on pupil or school premises
- supply of drugs by pupils

The following guidelines apply to drug related incidents:

- the needs and health and safety of the individual will come first
- all situations will be carefully considered and assessed before deciding on the response
- all incidents will be reported to the Headteacher
- parents /carers will be informed (unless this will jeopardise the safety of the pupil)
- the involvement of external agencies will be considered
- responses will include a variety of strategies and sanctions
- all incidents will be recorded on CPOMs

- referral to the appropriate services

Each incident will be assessed individually to ensure the most appropriate responses and action is taken. The school will consider very carefully the implications of any action it may take and any sanction will be in line with other breaches of school rules. The school will use a repertoire of responses based on the individual and refer to the behaviour policy. Unless there are exceptional circumstances we will inform parents /carers at the earliest opportunity so that we can work together to support the pupil and to resolve difficulties.

We have access to a range of professional colleagues who can give or obtain advice and support in drug or alcohol related situations. These include Children's Services, the Education Welfare Officer, the local Police Liaison Officer, members of the local Youth Offending Team (whose roles include supporting young people at risk of offending) our local Drug and Alcohol agencies and counselling services. These colleagues can help with a needs assessment and support us in developing an appropriate response. The pupil/s will always be told when information is being passed on, in accordance with the school's policy on confidentiality.

Our aim is to enable all pupil to fulfil their potential. We will work with the pupil, their parents or carers and colleagues from other agencies to remove barriers to achievement and resolve any difficulties that exist. Drug related situations will be considered alongside other circumstances in the young person's life and not in isolation. We accept that it is never appropriate to respond in a way that is more punitive than that which might be considered by the police so that exclusion, whilst it remains an option, will be used as the very last resort.

Should a substance suspected of being illicit be found on the school premises it will be handed to the headteacher and, in the presence of another member of staff placed in a sealed container in the school safe until it can be delivered to or collected by a police officer. S/he will also be involved in advising the school on the most appropriate response to the situation. The Local Authority School Drug Adviser and Drug & Alcohol Action Team are also able to provide guidance and advice.

PROCEDURES FOR ALL STAFF MEMBERS

- if there is evidence of drug misuse, take immediate action to reduce risk of harm to the pupil
- isolate the pupil/s if possible in separate rooms
- inform the Headteacher
- if the pupil is behaving erratically and physical intervention is required for their own safety or the safety of others or the environment, then the school's procedures found in the Physical Restraint and Use of Reasonable Force Policy must be followed
- make a full and careful assessment of the circumstances
- complete a written statement/log on CPOMs

PROCEDURES FOR SENIOR LEADERSHIP TEAM

The Headteacher will enquire into the facts and identify the accuracy of the information:

- If a pupil is suspected of concealing a substance that is not permitted on school premises or is thought to be illegal they will be asked to empty their pockets or bags or drawers – **(see separate section on searching)**
- If there is evidence, the school will take temporary possession of the substance. When doing this the school will:
 - Ensure that a second adult witness is present throughout
 - Seal the sample in a plastic bag and include details of the date and time of seizure/find and the witness present
 - Store it in a secure location with limited access
 - notify the police, who will collect and dispose of the substance (the law does not require the school to divulge the name of the pupil from whom the drugs were taken)
 - Record full details of the incident
 - Inform parents/carers unless this would jeopardise the safety of the pupil/s
 - Collect as much information as possible before taking any action

- Make a full assessment of the situation in particular gauging a pupil's needs
- Make a record of incident and action taken.

SEARCHING

It is not appropriate for a member of staff to conduct a personal search of a pupil, even for illegal drugs. **It is also not appropriate to search personal property without consent.** You should ask the pupil to voluntarily turn out their pockets and bags. If an individual refuses and the drug is believed to be illegal the school will consider whether to call the police. Staff may search school property (e.g. cupboards) if they believe drugs to be stored there. **Prior consent should be sought.** If this is refused the school will consider whether the likelihood that an offence has occurred outweighs the risk of infringing the individual's privacy.

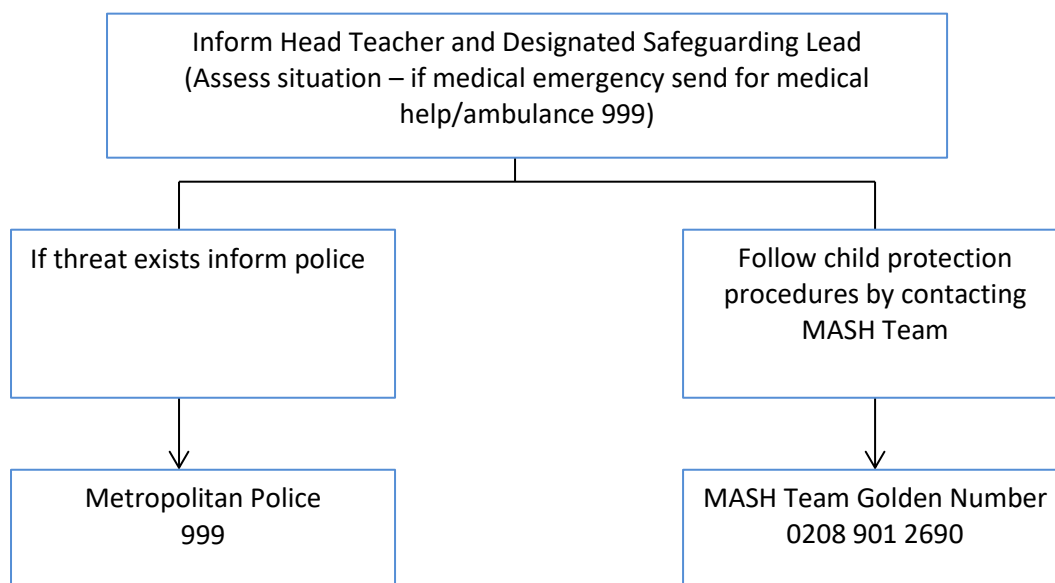
SMOKING STATEMENT

We are a smoke free school and staff, parents, pupils and visitors are not allowed to smoke anywhere on school premises or in sight of the school.

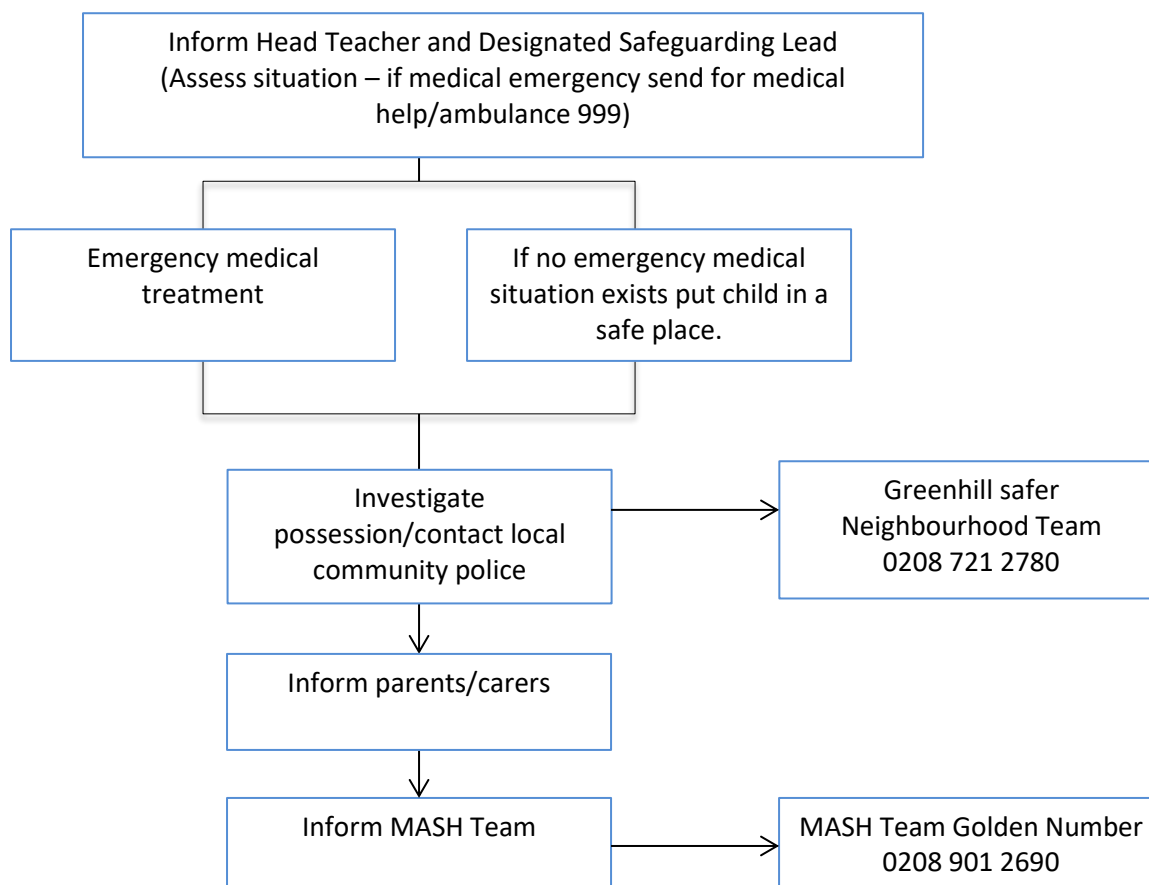
E-cigarettes (sometimes known as nicotine vaporisers)

Although e-cigarettes are not covered by smoking legislation, we do allow the use of e-cigarettes by pupils, staff, parents, contractors or visitors on the school premises and strongly discourage parents using them when collecting their children from school.

Parents/Carers/Others under the influence of drugs /alcohol on school premises.

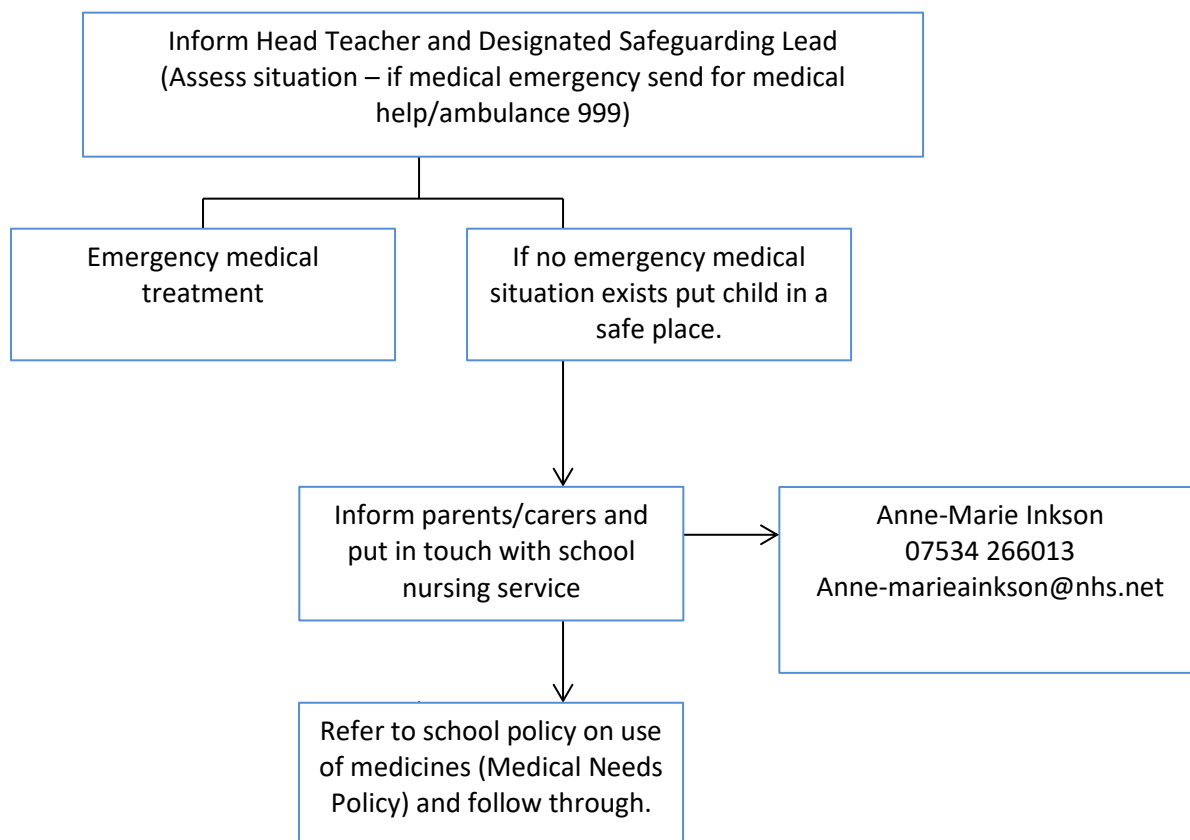


Pupil(s) under the influence of drugs /alcohol on school premises.

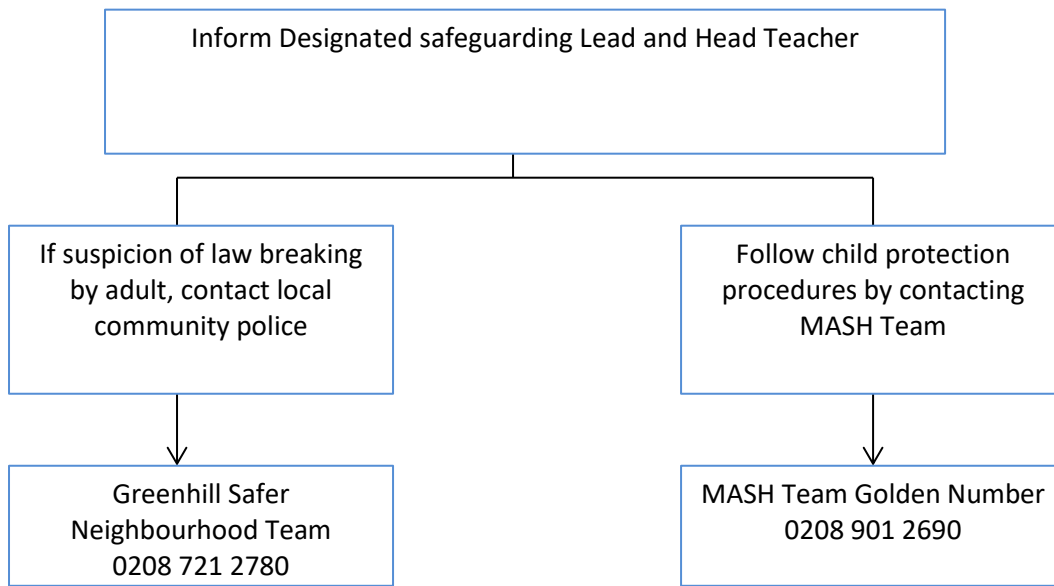


N.B. If tobacco is the drug used you may wish to follow school behaviour/discipline policy.

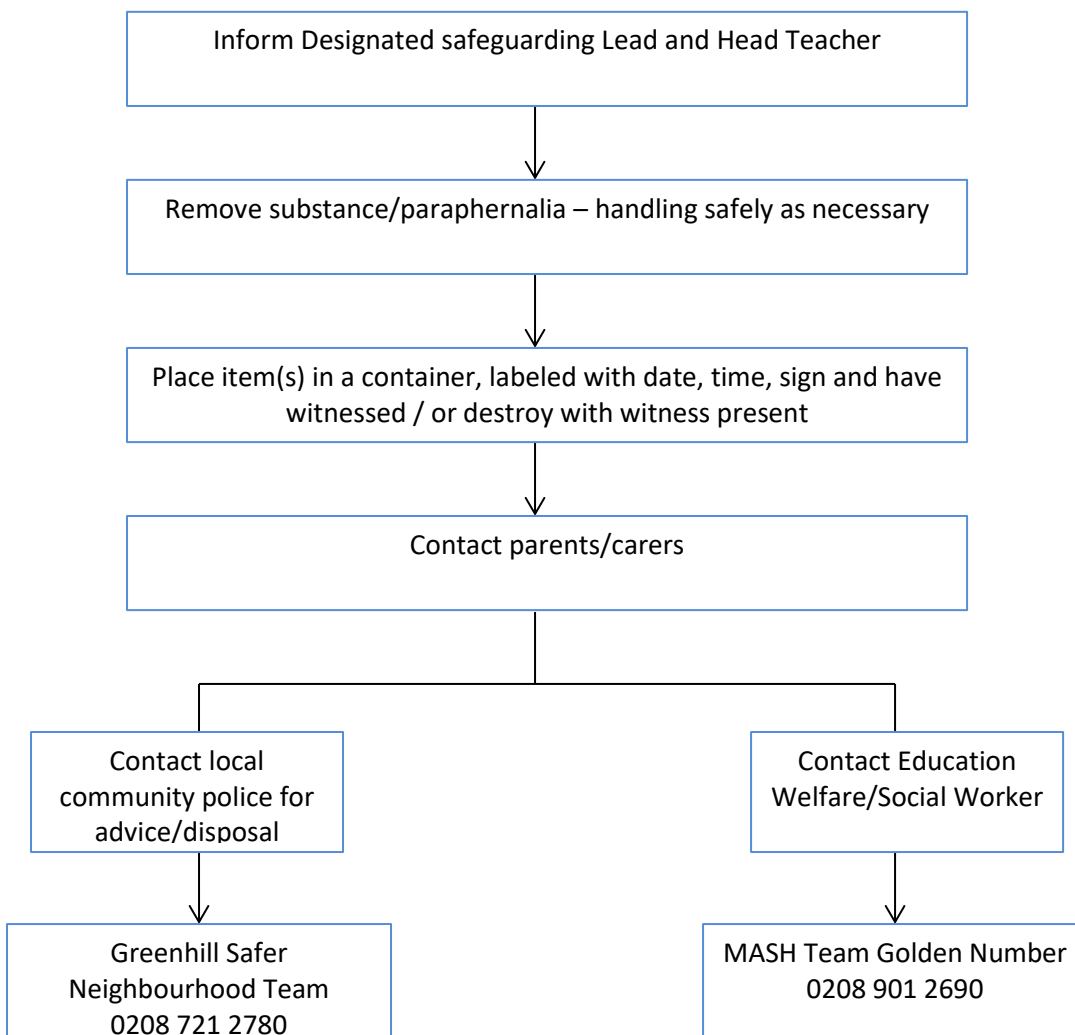
Pupils using medicines inappropriately on school premises.



Pupils makes disclosure about their own or parents/carers/others use of drugs/alcohol



Drugs and / or paraphernalia found on pupils and/or premises



Supplying (drugs/alcohol/tobacco) by pupils/parents/carers/others

